

## Everyone's Doing IT

As information technology (IT) plays an ever larger part in organizations and society, those individuals with knowledge and appreciation of such technologies stand to play a greater role in the shaping of the economic, managerial, political and social policies of the future.

With this ideal in mind, earning a Masters in MIS offers students an opportunity to develop and refine the skills necessary for competition in the digital age.

### TOP RECRUITERS of ELLER MIS GRADUATES

CERNER

DELOITTE

IBM

INTEL CORPORATION

GOOGLE

MICROSOFT

PRICEWATERHOUSECOOPERS

RAYTHEON MISSILE SYSTEMS

US AIRWAYS



## To Apply

Complete your application online at:  
[www.mis.eller.arizona.edu](http://www.mis.eller.arizona.edu)

Application Due Date: January 15 for Fall Semester  
(we do not have Spring Semester admissions)

Applications received after this date will be reviewed  
based on program capacity availability.

Students applying for the Dual Degree program  
must apply separately to both the MIS program  
and the Eller MBA program. You can learn  
more about the Eller MBA and its admission  
requirements at <http://ellermba.eller.arizona.edu/>

## Financial Aid

Many of our faculty have research grants and will often  
hire Masters students with particular skills (usually  
programming skills) on a research assistantship.  
Occasionally teaching assistantships become  
available. Assistantships come with a stipend, out of  
state tuition waiver and student medical insurance.

For more information contact:  
Mona Lopez at 520-626-0493 or  
[mlopez@eller.arizona.edu](mailto:mlopez@eller.arizona.edu)

McClelland Hall 430  
P.O. Box 210108  
Tucson, Arizona 85721-0108  
520.621.2748  
[www.mis.eller.arizona.edu](http://www.mis.eller.arizona.edu)



## MANAGEMENT INFORMATION SYSTEMS

34 years old, a top-five MIS department for 20  
consecutive years, and continuing to lead by:

**Shaping the Future of IT through  
Partnership and Innovation**

## Management Information Systems

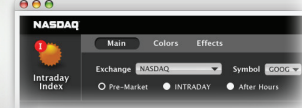
# Everyone's



Doing



# IT



**Eller** COLLEGE OF  
MANAGEMENT  
THE UNIVERSITY OF ARIZONA

## MIS Importance in the Real World

Companies continue to turn to integration as they seek a competitive edge by becoming more flexible and efficient. They move toward real-time infrastructures so they can adapt quickly to changing market conditions and serve their customers better.

From the driven, goal-oriented entrepreneurs to the worldwide, well-established corporations - each is committed to their best as they play a part in a real-life survival of the fittest.

Firms able to survive and prosper in this environment have one trait in common. The ability to make efficient use of information technology (IT). IT enables firms to not simply add, but multiply their efforts. It's almost magical when IT turns the effort of one person into many.

Put simply, IT helps business safely, and predictably, do more with less.

MIS professionals are the communication bridges between IT "techies" and "non-techies". They analyze, design, implement, and manage IT strategies and applications to help solve business problems. MIS students first learn business processes and then analyze how to improve the processes using IT.



MIS professionals work in many different business sectors such as hospitality, energy, medical, government, consulting groups, and non-profits. They may also work in various functional areas such as marketing, sales, accounting, entrepreneurship, and finance.

MIS professionals work on exciting projects in team-based, project orientated environments which involve high degrees of personal interaction with various types of stakeholders.



## 17 Month Masters Degree

Our traditional 17-month master's degree (MS-MIS) is a 32-unit, four semester program that includes a master's project in which students work closely with a faculty advisor in a cutting edge area of IT. The program encourages students to gain work experience through summer internships and special corporate projects. Students admitted to this program who do not have a degree in business administration may need to take up to two graduate-level business courses in different functional areas such as accounting, finance, management, marketing, or operations. No work experience is required for admission.

## Dual Degree: MS MIS & MBA

This 71-unit degree program combines the depth of the master's in MIS degree with the breadth of an MBA degree. It includes MIS coursework focused on professional development and the master's project, but students sharpen their business acumen further by simultaneously completing the MBA degree. A minimum of two to three years of work experience is required for admission.

*The MIS Master of Science degree develops professionals who are able to combine technology expertise with greater management and leadership roles with leading companies. We have an average placement rate of 96% within two months of graduation.*

## Curriculum

Our curriculum reflects best practices created by academic and industry professionals. It has been developed to address the real challenges and needs of the corporate world. The Eller MIS courses develop skills in communication, leadership, decision-making, and critical thinking built on a top-ranked MIS program. Our students graduate ready to hit the ground running, exceptionally prepared to navigate the complexities presented by today's market dynamics and increasing globalization.



## Rankings

*U.S. News & World Report* has ranked the Management Information Systems (MIS) program at the Eller College a top-5 program every year since the inception of the rankings in 1989 - making it one of only three programs nationwide to maintain this status.



**FT** In addition, *Financial Times* recently ranked our MIS Department number 9 globally in the first year of its IT specialty category.

More ranking information available at [www.mis.eller.arizona.edu](http://www.mis.eller.arizona.edu)

# Management Information Systems